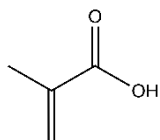


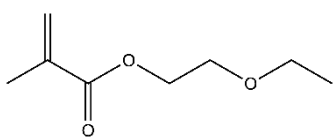
Methacrylate

MMA



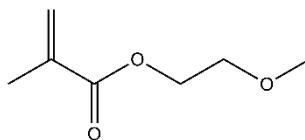
Methacrylic acid
CAS: 79-41-4

BX-EOEMA



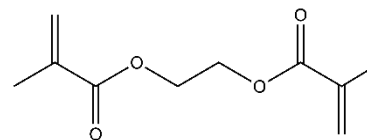
Ethoxyethyl methacrylate
CAS: 2370-63-0

BX-MOEMA



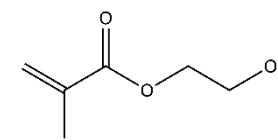
2-Methoxyethyl methacrylate
CAS: 6976-93-8

BX-EGDMA



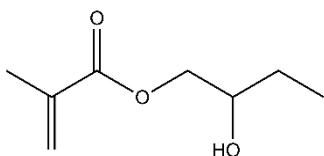
Ethyleneglycol dimethacrylate
CAS: 97-90-5

BX-HEMA



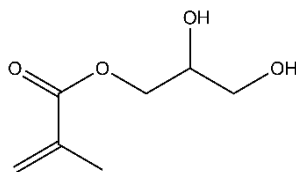
2-Hydroxyethyl methacrylate
CAS: 868-77-99

BX-HOBMA



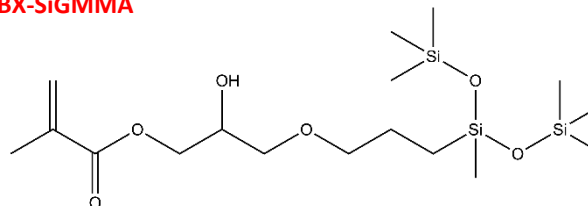
Hydroxybutyl methacrylate
CAS: 29008-35-3

BX-GMMA



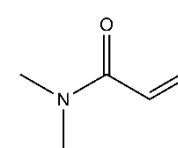
Glycerol monomethacrylate
CAS: 5919-74-4

BX-SiGMMA



Methyl di(trimethylsiloxy)silylpropylglyceryl methacrylate
CAS: 69861-02-5

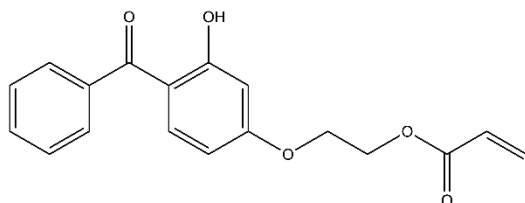
BX-DMA



N,N-Dimethylacrylamide
CAS: 2680-03-7

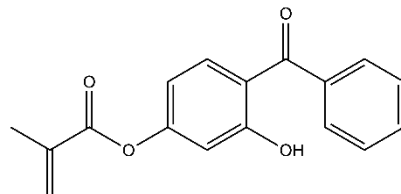
UV Blocker

BX-BHPEA



2-(4-Benzoyl-3-hydroxyphenoxy)ethyl acrylate
CAS: 16432-81-8

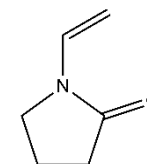
BX-HMBP



2-Hydroxy-4-methacryloxybenzophenone
CAS: 2035-72-5

Pyrrolidinone

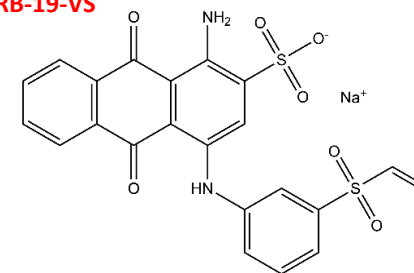
BX-NVP



N-Vinyl pyrrolidinone
CAS: 88-12-0

Blue Tint

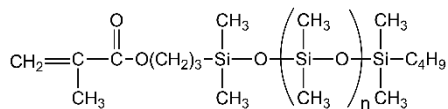
RB-19-VS



Uniblue A sodium salt
CAS: 14541-90-3

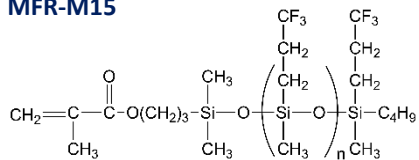
Asymmetric Silicone Macromers

MCR-M07: 6-9 cSt
MCR-M11: 10 cSt



monoMethacryloxypropyl terminated PDMS

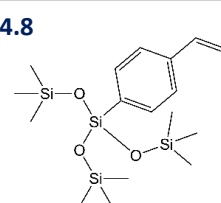
MFR-M15



monoMethacryloxypropyl terminated
Fluorinated siloxane, 50-70cSt

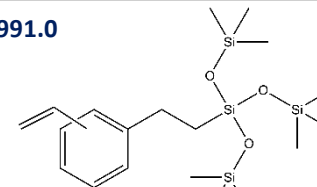
Styryl Functional Monomers

SIS6994.8



p-Styryltris(trimethylsiloxy)silane

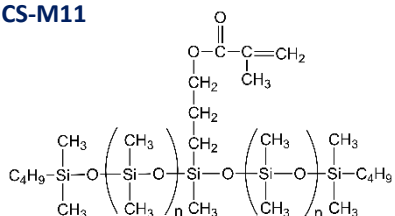
SIS6991.0



Styrylethyltris(trimethylsiloxy)silane, mixed isomers

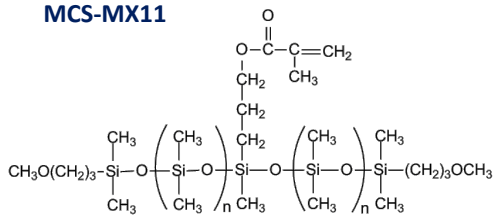
Symmetric Silicone Macromers

MCS-M11



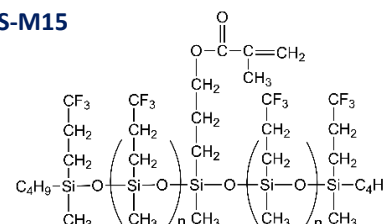
monoMethacryloxypropyl PDMS, 7-9cSt

MCS-MX11



monoMethacryloxypropyl PDMS,
Methoxypropyl terminated, 8-12cSt

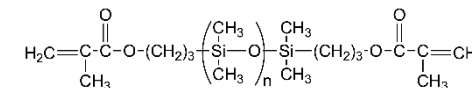
MFS-M15



monoMethacryloxypropyl fluorinated
siloxane, 50-70cSt

Silicone X-Linker

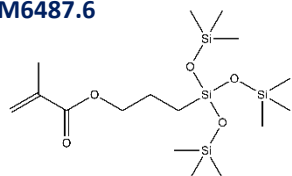
DMS-R05: 4-6 cSt
DMS-R11: 10 cSt



Methacryloxypropyl terminated PDMS

Methacrylate Functional Silanes

SIM6487.6

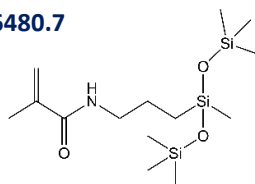


A

TRIS

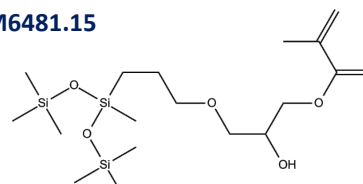
Methacryloxypropyltris(trimethylsiloxy)silane

SIM6480.7



(3-Methacrylamidopropyl)
bis(trimethylsiloxy)methylsilane

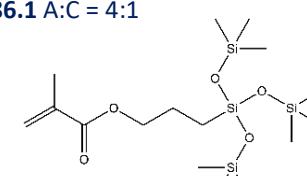
SIM6481.15



SIMMA

3-(3-Methacryloxy-2-hydroxypropoxy)propyl
bis(trimethylsiloxy)methylsilane

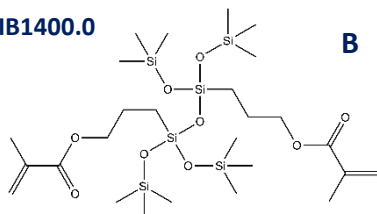
SIM6486.1 A:C = 4:1



A

Methacryloxypropyltris(trimethylsiloxy)silane

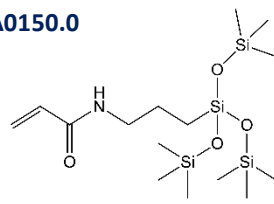
SIB1400.0



B

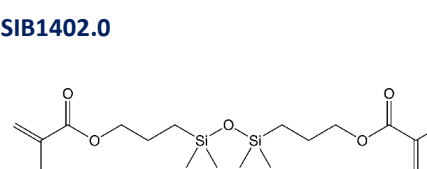
Bis(3-methacryloxypropyl)
tetrakis(trimethylsiloxy)disiloxane

SIA0150.0



Acrylamidopropyltris(trimethylsiloxy)silane

SIB1402.0



1,3-Bis(3-methacryloxypropyl)
tetramethyldisiloxane

C

Methacryloxypropylbis(trimethylsiloxy)silanol

SIM6487.6-06 A:B = 94% : 6%

SIM6487.6-20 A:B = 80% : 20%