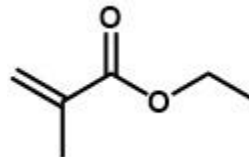


BIMAX® EMA

Ethyl methacrylate
CAS No. 97-63-2
EINECS No. 2055975



Applications

This material has applications in the plastics industry (ie. manufacturing, additives and modifiers), general adhesives, and binding agents for a variety of uses. Ethyl methacrylate is also used as a co-monomer in acrylic polymers for surface coating resins, dentures, contact lenses, artificial fingernails, as well as for use in the building, automotive, aerospace, and furniture industries. Ethyl methacrylate is also used in acrylic emulsion polymers for polishes. The high purity material can also be used in pharmaceutical, medical device, and personal care products.

Typical Properties

Purity, %	99.9
Color, APHA	< 5
Moisture, %	< 0.1
MEHQ, ppm	5-11

Physical Properties

Appearance	clear, colorless liquid
Molecular weight	114.1 g/mol
Flash Point, closed cup	19°C
Boiling point	118-119°C
Density (relative)	0.91 g/ml
Water solubility, 20°C	4.69 g/1L

Packaging

6-gallon steel pails containing 18 kg each

Storage and Handling

Store at temperatures below 32°C, away from heat and ignition sources. Wear goggles and gloves. Certain individuals may become sensitized to repeated exposure. Eye and skin contact, as well as inhalation, should be avoided. If contact occurs, wash affected area immediately with cold water. Consult the Safety Data Sheet.

This information is presented for your consideration in the belief that it is accurate and reliable; however, Bimax makes no guarantees or warranty, either expressed or implied, of the accuracy or the completeness of this information. The information in this data sheet is designed only as a guidance for safe handling, storage and use of the substance. It is not a specification, nor does it guarantee any specific properties. All chemicals should be handled only by competent personnel, within a controlled environment. Individuals receiving this information are expected to use their own judgment in determining the relevancy for a particular circumstance. Accordingly, Bimax will not be responsible for damages of any kind resulting from the use of, or reliance upon, such information.

281 Industrial Road Glen Rock, Pennsylvania 17327, USA

Tel: +1 717-227-1774 Fax: +1 717-227-1775