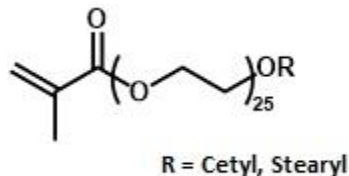


BIMAX® CSEM-25/100

Cetyl-Stearylethoxy (25) methacrylate
CAS No. 70789-51-5
EINECS No. Not applicable



Applications

This product is a waxy solid monomer used in associative thickeners, rheological additives, etc. because it can modify the surface activity of water-soluble polymers. It is an excellent nonionic surfactant, and unlike conventional surfactants it can be incorporated in the polymer backbone. Consequently, it can be used as a copolymerizable nonionic surfactant.

Typical Properties

Active content, %	94
Methacrylic acid, %	5
MEHQ, ppm	2,000

Physical Properties

Appearance	white to light yellow waxy solid
Molecular weight	1424 g/mol
Melting point, °C	50
Water solubility	soluble

Packaging

6.5-gallon open-head pail with screw-top lid, containing 18 kg each
55-gallon open top, lined steel drums, containing 200 kg each

Storage and Handling

Store in a dry place at temperatures below 32°C, away from heat and ignition sources. Wear goggles and gloves. Eye and skin contact, as well as inhalation, should be avoided. If contact occurs, wash affected area immediately with cold water. Consult the Safety Data Sheet.

This information is presented for your consideration in the belief that it is accurate and reliable; however, Bimax makes no guarantees or warranty, either expressed or implied, of the accuracy or the completeness of this information. The information in this data sheet is designed only as a guidance for safe handling, storage and use of the substance. It is not a specification, nor does it guarantee any specific properties. All chemicals should be handled only by competent personnel, within a controlled environment. Individuals receiving this information are expected to use their own judgment in determining the relevancy for a particular circumstance. Accordingly, Bimax will not be responsible for damages of any kind resulting from the use of, or reliance upon, such information.

281 Industrial Road Glen Rock, Pennsylvania 17327, USA
Tel: +1 717-227-1774 Fax: +1 717-227-1775