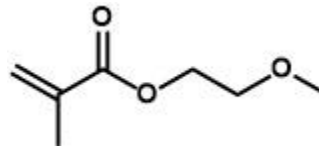


BIMAX® EGMA

2-Methoxyethyl methacrylate

CAS No. 6976-93-8

EINECS No. 2302419



Applications

This material has applications in intraocular lenses as well as transdermal devices and delivery.

Typical Properties

Purity, %	> 99.5
Color, APHA	< 5
Moisture, %	< 0.1
MEHQ, ppm	10-30

Physical Properties

Appearance	colorless liquid
Molecular weight	144.2 g/mol
Flash Point	66°C
Boiling point, 12 mmHg	65°C
Density (relative), 25°C	0.993 g/ml

Packaging

2.6-liter poly bottles, containing 2.5 kg each (15 kg per box)

55-gallon poly drums, containing 200 kg each

Storage and Handling

Store at temperatures below 32°C, away from heat. Wear goggles and gloves. Eye and skin contact, as well as inhalation, should be avoided. If contact occurs, wash affected area immediately with cold water. Consult the Safety Data Sheet.

This information is presented for your consideration in the belief that it is accurate and reliable; however, Bimax makes no guarantees or warranty, either expressed or implied, of the accuracy or the completeness of this information. The information in this data sheet is designed only as a guidance for safe handling, storage and use of the substance. It is not a specification, nor does it guarantee any specific properties. All chemicals should be handled only by competent personnel, within a controlled environment. Individuals receiving this information are expected to use their own judgment in determining the relevancy for a particular circumstance. Accordingly, Bimax will not be responsible for damages of any kind resulting from the use of, or reliance upon, such information.

281 Industrial Road Glen Rock, Pennsylvania 17327, USA

Tel: +1 717-227-1774 Fax: +1 717-227-1775