

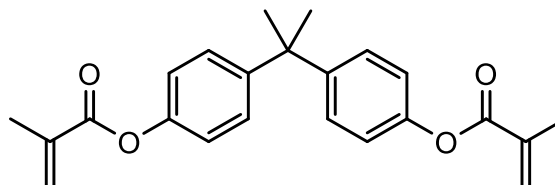
BIMAX® BPADMA

Bisphenol A dimethacrylate

CAS No. 3253-39-2

EINECS No. 221-846-9

Developmental



Applications

This material has applications in adhesive, paint, coating, plastic material, and resin manufacturing. It has also been used in the manufacture of tooth replacement parts suitable for supplying crowns, bridges, inlays, and the like.

Typical Properties

Purity	> 97.5
Color, APHA	< 40
Volatiles, %	< 0.30

Physical Properties

Appearance	white solid
Molecular weight	364.4 g/mol
Melting point	74-78°C
Density (relative), 20°C	1.091±0.06 g/cm ³

Packaging

5-gallon pails, containing 18kg each

Storage and Handling

Store at temperatures below 32°C, away from heat, light and polymerization initiators. Wear goggles and gloves. Eye and skin contact, as well as inhalation, should be avoided. If contact occurs, wash affected area immediately with cold water. Consult the Safety Data Sheet.

This information is presented for your consideration in the belief that it is accurate and reliable; however, Gelest makes no guarantees or warranty, either expressed or implied, of the accuracy or the completeness of this information. The information in this data sheet is designed only as a guidance for safe handling, storage and use of the substance. It is not a specification, nor does it guarantee any specific properties. All chemicals should be handled only by competent personnel, within a controlled environment. Individuals receiving this information are expected to use their own judgment in determining the relevancy for a particular circumstance. Accordingly, Gelest will not be responsible for damages of any kind resulting from the use of, or reliance upon, such information.

281 Industrial Road Glen Rock, Pennsylvania 17327, USA

Tel: +1 717-227-1774 Fax: +1 717-227-1775