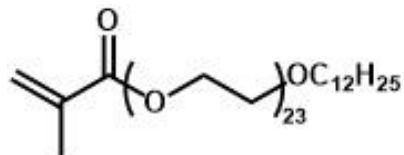


## BIMAX® LEM-23/100

Lauryl polyethoxy (23) methacrylate  
CAS No. 136505-03-8  
EINECS No. Not applicable  
*Developmental*



### Applications

This material is a waxy solid monomer used in associative thickeners, rheological additives, and the like. It is an excellent nonionic surfactant that can be incorporated in the polymer backbone unlike other conventional surfactants. Consequently, lauryl polyethoxy (23) methacrylate can be used as a copolymerisable nonionic surfactant.

#### Typical Properties

Active content, %	92-94
Methacrylic acid, %	6.0-8.0

#### Physical Properties

Appearance	waxy solid
Molecular weight	1354 g/mol
Density (relative)	1.06 g/ml
Water solubility	soluble
Melting point, °C	45

### Packaging

55-gallon open top steel drums, containing 200kg each

### Storage and Handling

Store at temperatures below 32°C, away from heat and ignition sources. Wear goggles and gloves. Eye and skin contact, as well as inhalation, should be avoided. If contact occurs, wash affected area immediately with cold water. Consult the Safety Data Sheet.

This information is presented for your consideration in the belief that it is accurate and reliable; however, Bimax makes no guarantees or warranty, either expressed or implied, of the accuracy or the completeness of this information. The information in this data sheet is designed only as a guidance for safe handling, storage and use of the substance. It is not a specification, nor does it guarantee any specific properties. All chemicals should be handled only by competent personnel, within a controlled environment. Individuals receiving this information are expected to use their own judgment in determining the relevancy for a particular circumstance. Accordingly, Bimax will not be responsible for damages of any kind resulting from the use of, or reliance upon, such information.