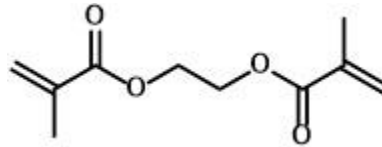


BIMAX® EGDMA

Ethylene glycol dimethacrylate
CAS No. 97-90-5
EINECS No. 2026172



Applications

This material is a high purity monomer used as a crosslinker for contact lens applications.

Typical Properties

Purity, %	> 99.5
2-hydroxyethyl methacrylate, %	< 0.50
Color, APHA	< 10
Moisture, %	< 0.25
MEHQ, ppm	40-80
Acidity, %	< 0.01

Physical Properties

Appearance	clear, colorless liquid
Molecular weight	198.2 g/mol
Refractive index, 25°C	1.451-1.455
Boiling range	83-85°C
Flash point	101.5°C
Water solubility, 20°C	5 g/L

Packaging

2.6-liter poly bottles, containing 2.5 kg each (15 kg per box)
5-gallon poly pails, containing 18 kg each
55-gallon poly drums, containing 200 kg each

Storage and Handling

Store at temperatures below 32°C, away from heat, sunlight, and ignition sources. Saturate with atmospheric oxygen. Wear goggles and gloves. Eye and skin contact should be avoided. May cause sensitization by skin contact. If contact occurs, wash affected area immediately with cold water. Consult the Safety Data Sheet.

This information is presented for your consideration in the belief that it is accurate and reliable; however, Bimax makes no guarantees or warranty, either expressed or implied, of the accuracy or the completeness of this information. The information in this data sheet is designed only as a guidance for safe handling, storage and use of the substance. It is not a specification, nor does it guarantee any specific properties. All chemicals should be handled only by competent personnel, within a controlled environment. Individuals receiving this information are expected to use their own judgment in determining the relevancy for a particular circumstance. Accordingly, Bimax will not be responsible for damages of any kind resulting from the use of, or reliance upon, such information.

281 Industrial Road Glen Rock, Pennsylvania 17327, USA
Tel: +1 717-227-1774 Fax: +1 717-227-1775